



Firs Drive, Cranford, TW5 9TD

Offers In Excess Of £570,000

ANOTHER SALE BY STAMFORDS! Situated on this impressive corner plot with potential to extend (stpp) and location in one of Cranfords most prestigious residential locations is this three bedroom semi-detached family home with lots of original features. The accommodation comprises two separate reception rooms, kitchen, on the first floor three generous sized bedrooms a family bathroom and a separate w/c. Outside a front garden, own driveway with off street parking, side space with potential to extend (stpp) a widening rear garden and detached garage. The property is in need of modernisation and is offered for sale with no onward chain.

A partner of
The Guild Of Professional Estate Agents
with a network of over 700 independent estate agents

Associated Office: 121 Park Lane, Mayfair, London W1K 7AG t 020 7318 7075

Enclosed Entrance Porch

Front door to...

Entrance Hallway

Power point, picture rail, parque flooring, stairs to first floor, doors to rooms.

Reception One



Front aspect double and secondary glazed window, parque flooring, tiled fireplace, picture rail, power point.

Reception Two



Double glazed window and door to garden, feature tiled fireplace, power point, radiator, parque flooring, picture rail.

Kitchen



Single drainer sink unit with mixer tap, wall mounted unit, space for cooker and washing machine, floor mounted boiler, part tiled walls, rear aspect window, larder cupboard and door to garden.

First Floor Landing

Feature stained glass secondary glazed window, access to loft, doors to rooms.

Bedroom One



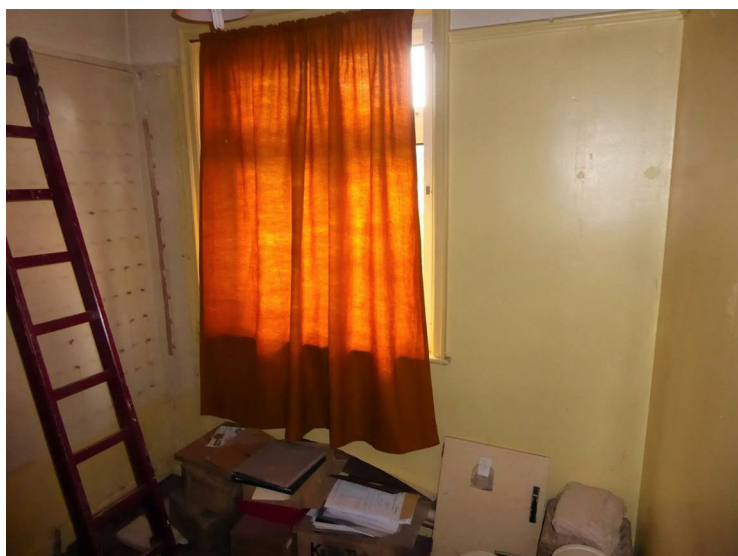
Front aspect double and secondary glazed window, two fireplaces.

Bedroom Two



Rear aspect double and secondary glazed window.

Bedroom Three



Front aspect double glazed window, built-in wardrobe with storage above.

Bathroom



Panel enclosed bath, wash hand basin, part tiled walls, side aspect secondary glazed window, airing cupboard housing cylinder tank.

Separate W/C

High level w/c, side aspect window.

Outside

Rear



Widening plot with potential to extend (stpp). Mainly laid to lawn area with mature trees and shrubs.

Side



Paved patio area, laid to lawn area with mature shrubs with potential to extend (stpp).

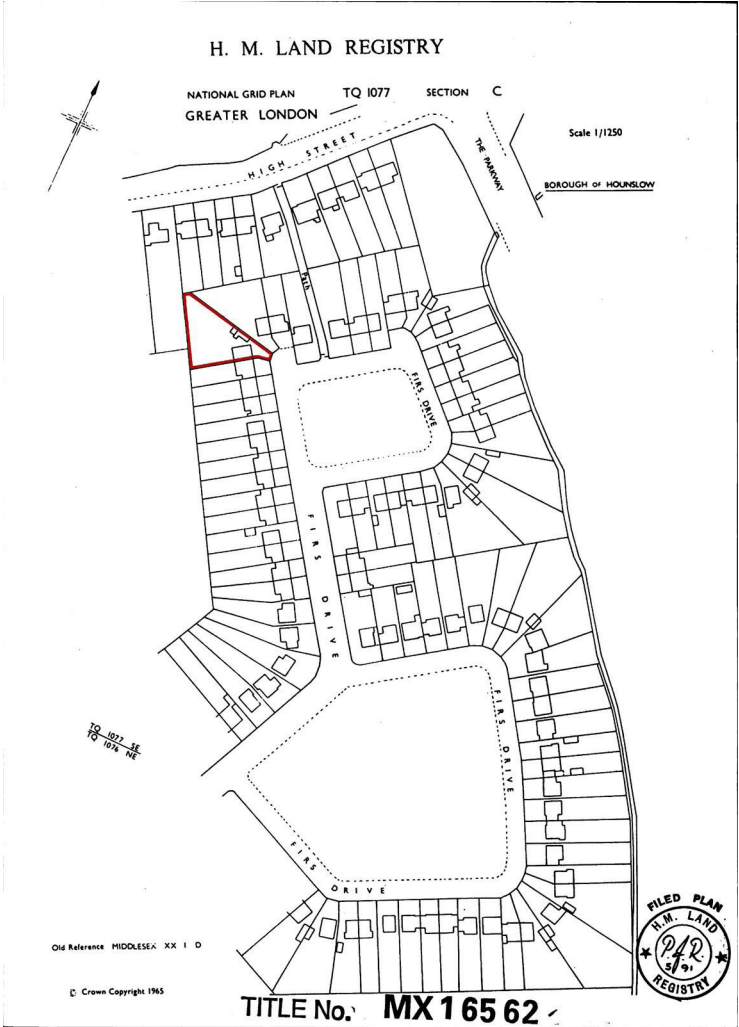
Detached Garage



Access via own driveway with double opening doors.

Front
Paved patio with shrub borders.

Title Plan



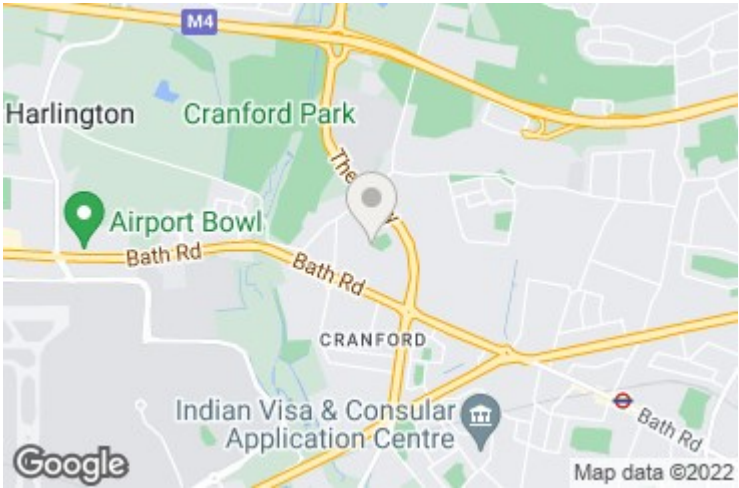
This is a copy of the title plan on 20 AUG 2021 at 14:35:13. This copy does not take account of any application made after that time even if still pending in HM Land Registry when this copy was issued.

This copy is not an 'Official Copy' of the title plan. An official copy of the title plan is admissible in evidence in a court to the same extent as the original. A person is entitled to be indemnified by the registrar if he or she suffers loss by reason of a mistake in an official copy. If you want to obtain an official copy, the HM Land Registry web site explains how to do this.

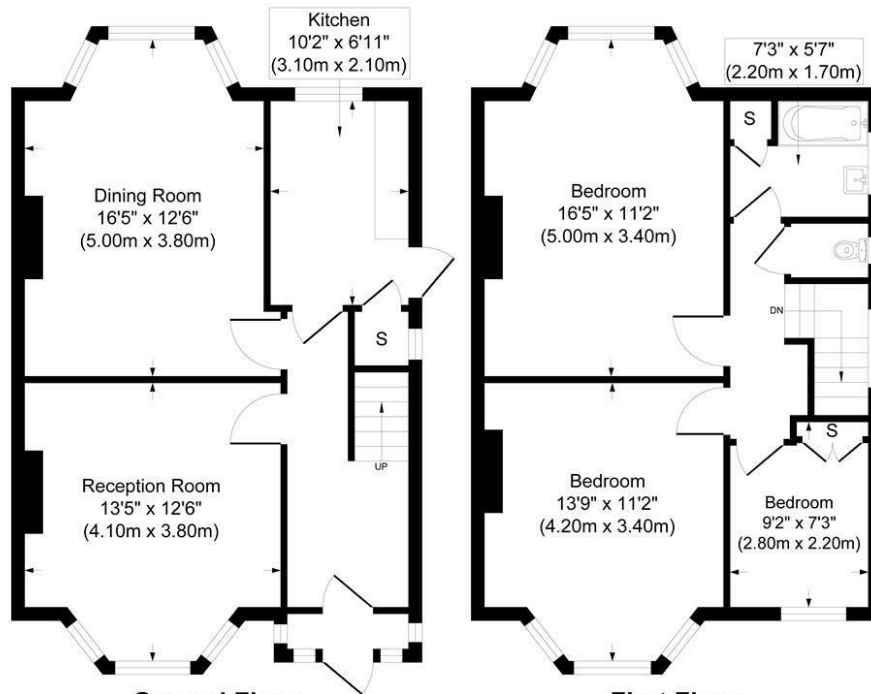
HM Land Registry endeavours to maintain high quality and scale accuracy of title plan images. The quality and accuracy of any print will depend on your printer, your computer and its print settings. This title plan shows the general position, not the exact line, of the boundaries. It may be subject to distortions in scale. Measurements scaled from this plan may not match measurements between the same points on the ground.

This title is dealt with by HM Land Registry, Wales Office.

© Crown Copyright. Produced by HM Land Registry. Further reproduction in whole or in part is prohibited without the prior written permission of Ordnance Survey. Licence Number 100026316.



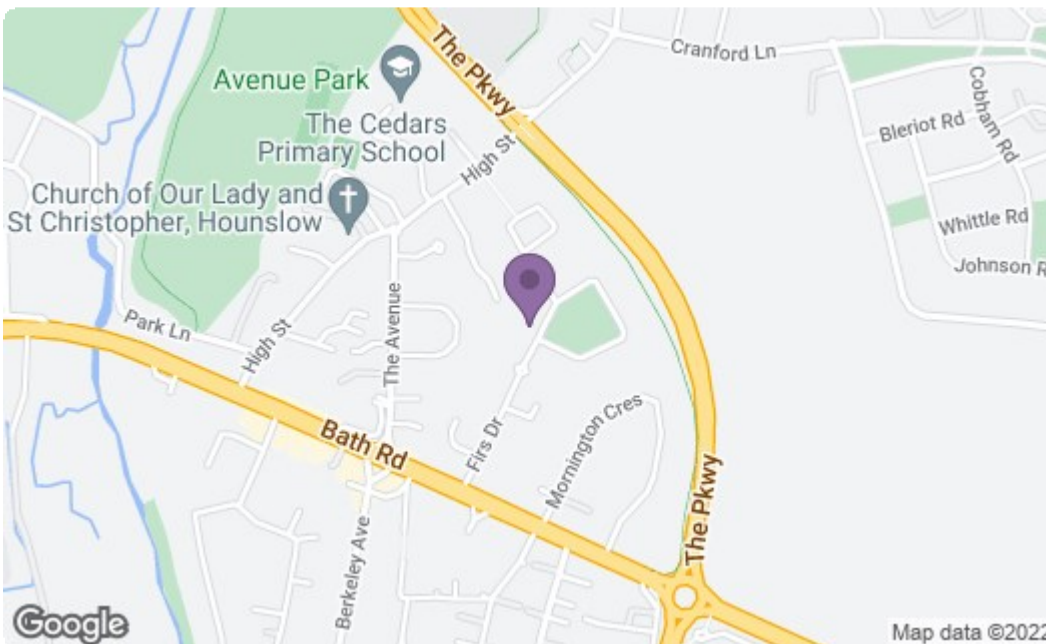
Firs Dr, Hounslow TW5 9TD



Ground Floor
Approximate Floor Area
509.13 sq. ft
(47.30 sq.m)

First Floor
Approximate Floor Area
497.18 sq. ft
(46.19 sq.m)

Approx. Gross Internal Floor Area 1006.31 sq. ft / 93.49 sq. m
Illustration for identification purposes only, measurements are approximate, not to scale
Produced by Instagram: RJORA.PHOTOGRAPHY



Energy Efficiency Rating		Current	Potential
Very energy efficient - lower running costs			
(92 plus) A			87
(81-91) B			
(69-80) C			
(55-68) D			
(39-54) E		40	
(21-38) F			
(1-20) G			
Not energy efficient - higher running costs			
England & Wales		EU Directive 2002/91/EC	
Environmental Impact (CO ₂) Rating		Current	Potential
Very environmentally friendly - lower CO ₂ emissions			
(92 plus) A			
(81-91) B			
(69-80) C			
(55-68) D			
(39-54) E			
(21-38) F			
(1-20) G			
Not environmentally friendly - higher CO ₂ emissions			
England & Wales		EU Directive 2002/91/EC	

A partner of
The Guild Of Professional Estate Agents
with a network of over 700 independent estate agents

Associated Office: 121 Park Lane, Mayfair, London W1K 7AG t 020 7318 7075